

General

- Low profile design
- Photocell sensor
- Deep cycle battery will charge and discharge over 2000 times
- Up to 177lm/w
- 8 Hour charge time from fully depleted battery
- 3000K-6500K CCT
- Wildlife/Turtle friendly amber CCT available



Exclusive Free
Battery Recycling
Program



Certifications

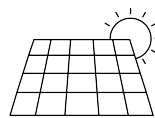


Available with:

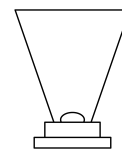


5G Remote Access

- Monitor
- Set Timing
- Get Alerts
- Dimming



Monocrystalline
Solar Module



Philips Lumileds
Luxeon 5050 Chips



IP65



Bluetooth
Programming
(optional)



AMERICAN COMBAT VETERAN OWNED COMPANY



405-673-8684

www.gridshiftsolar.lighting

Corporate: 2803 Broadway Ct. Edmond, OK 73013
 California: 1341 Distribution Way, Suite 20, Vista, CA 92081

Cuesta Sol is a trademark of GridShift Solutions, LLP



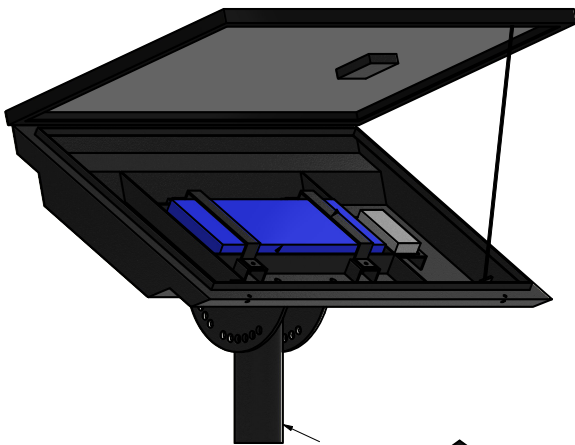
Wounded Warrior Project

Construction

- Solar assembly construction marine grade aluminum and stainless steel
- UV stabilized polyester powder coat finish over primer for durability and corrosion resistance
- Streamlined design to reduce wind resistance
- All key components located beneath solar panel. Providing protection and easy access for maintenance
- Assembly comes pre-drilled and tapped for ease of installation
- Integral monocrystalline silicon solar panel
- 25 Year Lifespan
- Conversion rate up to 30%

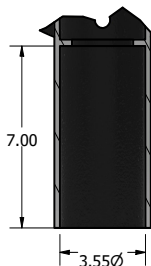


Solar Panel



3.5" X 6" Pole top tenon required for solar panel installation

*Custom Slip fitters available upon request



AMERICAN COMBAT VETERAN OWNED COMPANY



405-673-8684
www.gridshiftsolar.lighting

GRIDSHIFT™
SOLAR LIGHTING

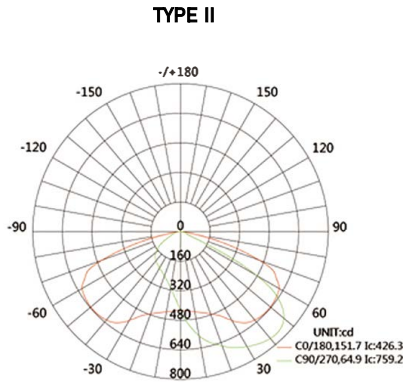
Corporate: 2803 Broadway Ct. Edmond, OK 73013
 California: 1341 Distribution Way, Suite 20, Vista, CA 92081

Cuesta Sol is a trademark of GridShift Solutions, LLP

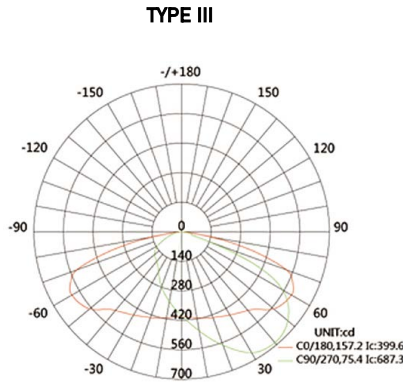


Wounded Warrior Project

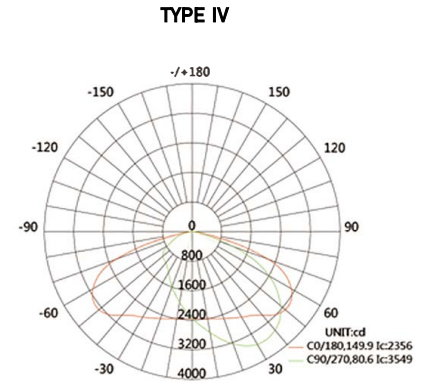
Photometry



Average Beam Angle (50%): 108.3° Unit:cd



Average Beam Angle (50%): 116.3° Unit:cd



Average Beam Angle (50%): 115.3° Unit:cd

	CS-PRE-20W	CS-PRE-40W	CS-PRE-60W	CS-PRE-100W
Wattage	20W	40W	60W	100W
LED Chip	5050	5050	5050	5050
Lumen Output	3540lm	6680lm	10080lm	16800lm
Efficacy	177lm/w	167lm/w	168lm/w	168lm/w
Weight	42lbs	45lbs	45lbs	101lbs
EPA	4.2	5.5	9	12.5
BUG Rating	B2-U0-G1	B2-U0-G1	B2-U0-G1	3-U0-G2
Optional Beam Angle	T2/T3/T4			
Input Voltage	12-24V DC			
Photovoltaic Panel	Double Crystal Photovoltaic Panel			
Solar Panel	18V/70W	18V/130W	36V/200W	36V/280W
Lithium-Ion Battery	691.2WH 12.8V 54AH	1382.4WH 12.8V 102AH	2150.4WH 25.6V 84AH	2611.2WH 25.6V 102AH
Discharge Time (Full Charge)	30 Hours			
Installation Height	10-13ft	16-19ft	22-26ft	36-39ft
Working Temperature	14°F to 122°F			
Charging Temperature	32°F to 113°F			
Control System	MPPT Intelligent Controller			
Autonomy	30%-100% 102hrs (Max) 20%-80% 155hrs (Max)			
Constant Mode (Full Charge)	100% 30hrs 40% 78hrs			
Wildlife & Turtle Friendly CCT	5050 LED Chips, 1900K CCT, 1.8% blue light content, 400-500 nanometer range of the visible light spectrum			



AMERICAN COMBAT VETERAN OWNED COMPANY



405-673-8684
www.gridshiftsolar.lighting





CS-PRE-(20W-40W-60W-100W)-S



CS-PRE-(20W-40W-60W-100W)-D

Model #	Watts	Voltage	00-No Motion SN-Motion Sensor	Color Temp in 100K	CRI	Available Optic Types	Optional 5G Remote Access (Yes/No)	S - Single D - Double
Cuesta Sol CS-PRE	20	NV-12 DC	00 / SN	19K / 30K / 40K / 50K / 57K / 65K	70 CRI / 80 CRI	II / III / IV	Y / N	S / D
Cuesta Sol CS-PRE	40	NV-12 DC	00 / SN	19K / 30K / 40K / 50K / 57K / 65K	70 CRI / 80 CRI	II / III / IV	Y / N	S / D
Cuesta Sol CS-PRE	60	NV-24V DC	00 / SN	19K / 30K / 40K / 50K / 57K / 65K	70 CRI / 80 CRI	II / III / IV	Y / N	S / D
Cuesta Sol CS-PRE	100	NV-24V DC	00 / SN	19K / 30K / 40K / 50K / 57K / 65K	70 CRI / 80 CRI	II / III / IV	Y / N	S / D

Ordering Description Example								
Cuesta Sol CS-PRE	60	NV-24V DC	SN	50	80	IV	Y	S

Ordering Description								
Cuesta Sol CS-PRE	20	NV-12 DC						
Cuesta Sol CS-PRE	40	NV-12 DC						
Cuesta Sol CS-PRE	60	NV-24V DC						
Cuesta Sol CS-PRE	100	NV-24V DC						



AMERICAN COMBAT VETERAN OWNED COMPANY



405-673-8684
www.gridshiftsolar.lighting

